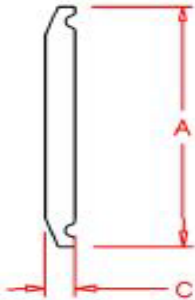


CAPS

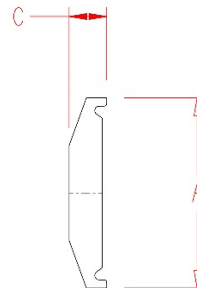
A16AMP – HYGIENIC CLAMP JOINT SOLID END CAP

Size	A	C	PL / SF1 / 20 ra	PM/ SF4 / 15ra EP
* 1/4 Type A	0.984	0.187	A16AMP-MINI-PL-316L	A16AMP-MINI-PM-316L
* 3/8 Type A	0.984	0.187	A16AMP-MINI-PL-316L	A16AMP-MINI-PM-316L
* 1/2 Type A	0.984	0.187	A16AMP-MINI-PL-316L	A16AMP-MINI-PM-316L
* 3/4 Type A	0.984	0.187	A16AMP-MINI-PL-316L	A16AMP-MINI-PM-316L
1 Type A	1.339	0.250	A16AMP-1A-PL-316L	A16AMP-1A-PM-316L
1 Type B	1.984	0.250	A16AMP-1-PL-316L	A16AMP-1-PM-316L
1 1/2 Type B	1.984	0.250	A16AMP-1(1.5)-PL-316L	A16AMP-1(1.5)-PM-316L
2 Type B	2.516	0.250	A16AMP-2-PL-316L	A16AMP-2-PM-316L
2 1/2 Type B	3.047	0.250	A16AMP-2.5-PL-316L	A16AMP-2.5-PM-316L
3 Type B	3.579	0.250	A16AMP-3-PL-316L	A16AMP-3-PM-316L
4 Type B	4.682	0.312	A16AMP-4-PL-316L	A16AMP-4-PM-316L
6 Type B	6.570	0.437	A16AMP-6-PL-316L	A16AMP-6-PM-316L

*Mini cap covers any size 3/4" and below



TYPE B CAP



TYPE A CAP